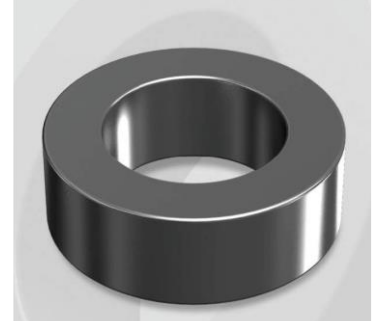


CK400060G

Electrical Characteristics

Material	Permeability (μ)	AL ± 8% (nH/N ²)	DCB (% min) @ 100 Oe	Coreloss (mW/cm ² , max) @ 50kHz, 500G
Mega Flux	60	81	59.8	160

OD : 400



Core Dimensions

Dimensions		Uncoated		Coated		Color	Packaging
		(mm)	(inch)	(mm)	(inch)		
OD	(Max)	39.88	1.570	40.70	1.602	Black	Box Qty = 120 pcs
ID	(min)	24.13	0.950	23.30	0.917		
HT	(max)	14.48	0.570	15.37	0.605		

Physical Characteristics

Cross Section (A)	Path Length (ℓ)	Window Area (Wa)	Volume (V)	Breakdown Voltage (Vac)
1.072 cm ²	9.84 cm	4.27 cm ²	10.55 cm ³	1,000
0.166 in ²	3.874 in	842,708 cmil	0.6438 in ³	

Winding Information

0% Winding length/turn (cm)		
4.814		
40% winding factor Surface Area (cm ²)		
73.77		
40% Wound Di.(mm)		
OD	ID	HT
46.57	15.26	22.32

For Your Reference Only

Typical DC Bias Performance

