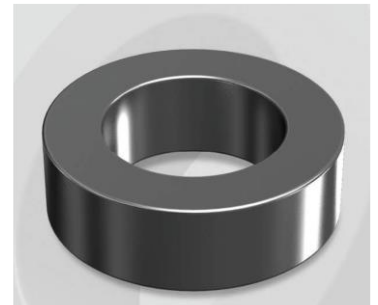


CK400019G

Electrical Characteristics

Material	Permeability (μ)	AL \pm 8% (nH/N ²)	DCB (% min) @ 200 Oe	Coreloss (mW/cm ³ , max) @ 50kHz, 500G
Mega Flux	19	26	77.3	170

OD : 400



Core Dimensions

Dimensions		Uncoated		Coated		Color	Packaging
		(mm)	(inch)	(mm)	(inch)		
OD	(Max)	39.88	1.570	40.70	1.602	Black	Box Qty = 120 pcs
ID	(min)	24.13	0.950	23.30	0.917		
HT	(max)	14.48	0.570	15.37	0.605		

Physical Characteristics

Cross Section (A)	Path Length (l)	Window Area (Wa)	Volume (V)	Breakdown Voltage (Vac)
1.072 cm ²	9.84 cm	4.27 cm ²	10.5485 cm ³	1,000
0.1662 in ²	3.87 in	842,708 cmil	0.644 in ³	

Winding Information

0% Winding length/turn (cm)		
4.814		
40% winding factor Surface Area (cm ²)		
73.77		
40% Wound Di.(mm)		
OD	ID	HT
46.57	15.26	22.32

For Your Reference Only

Typical DC Bias Performance

