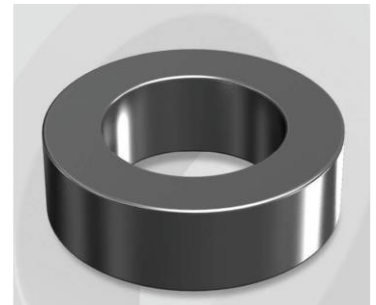


# CK229090G

## Electrical Characteristics

Material	Permeability ( $\mu$ )	AL $\pm$ 8% (nH/N <sup>2</sup> )	DCB (% min) @ 60 Oe	Coreloss (mW/cm <sup>3</sup> , max) @50kHz, 1000G
Mega Flux	90	65	55.2	710

OD : 229



## Core Dimensions

Dimensions		Uncoated		Coated		Color	Packaging
		(mm)	(inch)	(mm)	(inch)		
OD	(Max)	22.86	0.900	23.62	0.930	Black	Box Qty = 850 pcs
ID	(min)	13.97	0.550	13.39	0.527		
HT	(max)	7.62	0.300	8.38	0.330		

## Physical Characteristics

Cross Section (A)	Path Length (l)	Window Area (Wa)	Volume (V)	Breakdown Voltage (Vac)
0.3310 cm <sup>2</sup>	5.67 cm	1.410 cm <sup>2</sup>	1.8768 cm <sup>3</sup>	1,000
0.05131 in <sup>2</sup>	2.232 in	278,271 cmil	0.1145 in <sup>3</sup>	

## Winding Information

0% Winding length/turn (cm)		
2.699		
40% winding factor Surface Area (cm <sup>2</sup> )		
24.13		
40% Wound Di.(mm)		
OD	ID	HT
26.99	8.77	12.37

For Your Reference Only

## Typical DC Bias Performance

