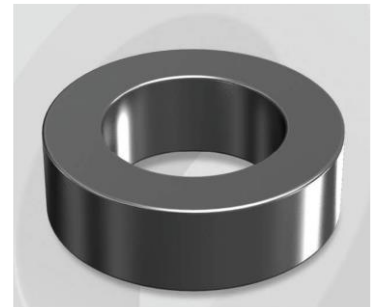


CK203090G

Electrical Characteristics

Material	Permeability (μ)	AL \pm 8% (nH/N ²)	DCB (% min) @ 60 Oe	Coreloss (mW/cm ² , max) @ 50kHz, 1000G
Mega Flux	90	49	55.2	710

OD : 203



Core Dimensions

Dimensions		Uncoated		Coated		Color	Packaging
		(mm)	(inch)	(mm)	(inch)		
OD	(Max)	20.32	0.800	21.10	0.831	Black	Box Qty = 1,368 pcs
ID	(min)	12.70	0.500	12.07	0.475		
HT	(max)	6.35	0.250	7.11	0.280		

Physical Characteristics

Cross Section (A)	Path Length (l)	Window Area (Wa)	Volume (V)	Breakdown Voltage (Vac)
0.23 cm ²	5.09 cm	1.14 cm ²	1.15 cm ³	1,000
0.035 in ²	2.004 in	224,985 cmil	0.07 in ³	

Winding Information

0% Winding length/turn (cm)		
2.325		
40% winding factor Surface Area (cm ²)		
18.95		
40% Wound Di.(mm)		
OD	ID	HT
24.13	7.89	10.72

For Your Reference Only

Typical DC Bias Performance

