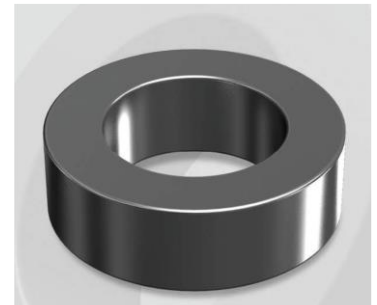


CK1320026G

Electrical Characteristics

Material	Permeability (μ)	AL ± 8% (nH/N ²)	DCB (% min) @ 50 Oe	Coreloss (mW/cm ³ , max) @50kHz, 100G
Mega Flux	26	54	86.5	10

OD : 1320



Core Dimensions

Dimensions		Uncoated		Coated		Color	Packaging
		(mm)	(inch)	(mm)	(inch)		
OD	(Max)	132.50	5.217	134.20	5.283	Black	Box Qty = 5 pcs
ID	(min)	78.60	3.094	77.00	3.031		
HT	(max)	20.30	0.799	21.70	0.854		

Physical Characteristics

Cross Section (A)	Path Length (ℓ)	Window Area (Wa)	Volume (V)	Breakdown Voltage (Vac)
5.347 cm ²	32.42 cm	46.57 cm ²	173.350 cm ³	1,000
0.829 in ²	12.76 in	9,190,102 cmil	10.578 in ³	

Winding Information

0% Winding length/turn (cm)		
10.060		
40% winding factor Surface Area (cm ²)		
617.08		
40% Wound Di.(mm)		
OD	ID	HT
153.59	50.41	44.69

For Your Reference Only

Typical DC Bias Performance

