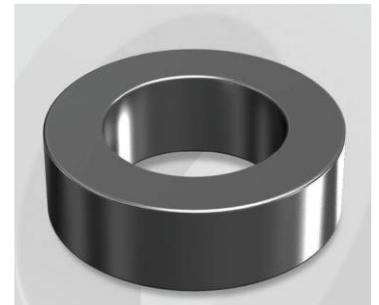


# CH740060GT

## Electrical Characteristics

Material	Permeability ( $\mu$ )	AL $\pm$ 8% (nH/N <sup>2</sup> )	DCB (% min) @ 100 Oe	Coreloss (mW/cm <sup>3</sup> , max) @ 50kHz, 300G
High Flux GT	60	206	77.4	14

OD : 740



## Core Dimensions

Dimensions		Uncoated		Coated		Color	Packaging
		(mm)	(inch)	(mm)	(inch)		
OD	(Max)	74.10	2.917	75.20	2.961	Black	Box Qty = 15 pcs
ID	(min)	45.30	1.783	44.07	1.735		
HT	(max)	35.00	1.378	36.27	1.428		

## Physical Characteristics

Cross Section (A)	Path Length (l)	Window Area (Wa)	Volume (V)	Breakdown Voltage (Vac)
5.04 cm <sup>2</sup>	18.38 cm	15.25 cm <sup>2</sup>	92.64 cm <sup>3</sup>	1,000
0.781 in <sup>2</sup>	7.236 in	3,009,670 cmil	5.653 in <sup>3</sup>	

## Winding Information

0% Winding length/turn (cm)		
10.367		
40% winding factor Surface Area (cm <sup>2</sup> )		
283.09		
40% Wound Di.(mm)		
OD	ID	HT
86.36	28.85	49.46

For Your Reference Only

## Typical DC Bias Performance

