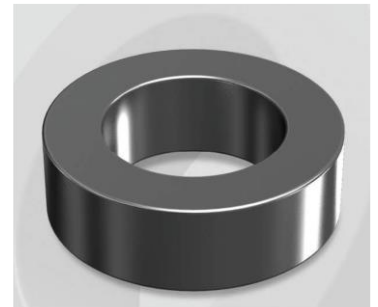


CH610060GT

Electrical Characteristics

Material	Permeability (μ)	AL \pm 8% (nH/N ²)	DCB (% min) @ 100 Oe	Coreloss (mW/cm ² , max) @ 50kHz, 300G
High Flux GT	60	192	77.4	14

OD : 610



Core Dimensions

Dimensions		Uncoated		Coated		Color	Packaging
		(mm)	(inch)	(mm)	(inch)		
OD	(Max)	62.00	2.441	63.10	2.484	Black	Box Qty = 24 pcs
ID	(min)	32.60	1.283	31.37	1.235		
HT	(max)	25.00	0.984	26.27	1.034		

Physical Characteristics

Cross Section (A)	Path Length (l)	Window Area (Wa)	Volume (V)	Breakdown Voltage (Vac)
3.675 cm ²	14.37 cm	7.73 cm ²	52.81 cm ³	1,000
0.570 in ²	5.657 in	1,525,558 cmil	3.222 in ³	

Winding Information

0% Winding length/turn (cm)		
8.427		
40% winding factor Surface Area (cm ²)		
173.99		
40% Wound Di.(mm)		
OD	ID	HT
70.78	20.54	35.53

For Your Reference Only

Typical DC Bias Performance

