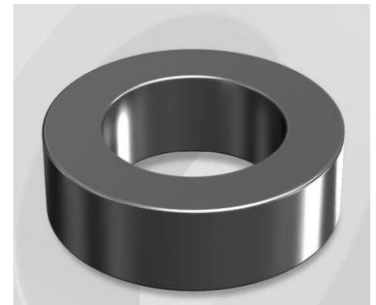


# CH596060GT

## Electrical Characteristics

Material	Permeability ( $\mu$ )	AL $\pm$ 8% (nH/N <sup>2</sup> )	DCB (% min) @ 100 Oe	Coreloss (mW/cm <sup>2</sup> , max) @ 50kHz, 300G
High Flux GT	60	125	77.4	14

OD : 596



## Core Dimensions

Dimensions		Uncoated		Coated		Color	Packaging
		(mm)	(inch)	(mm)	(inch)		
OD	(Max)	59.60	2.346	60.60	2.386	Black	Box Qty = 24 pcs
ID	(min)	34.00	1.339	33.00	1.299		
HT	(max)	19.50	0.768	20.50	0.807		

## Physical Characteristics

Cross Section (A)	Path Length ( $l$ )	Window Area (Wa)	Volume (V)	Breakdown Voltage (Vac)
2.371 cm <sup>2</sup>	14.33 cm	8.55 cm <sup>2</sup>	33.976 cm <sup>3</sup>	1,000
0.368 in <sup>2</sup>	5.64 in	1,687,389 cmil	2.0732 in <sup>3</sup>	

## Winding Information

0% Winding length/turn (cm)		
6.860		
40% winding factor Surface Area (cm <sup>2</sup> )		
153.11		
40% Wound Di.(mm)		
OD	ID	HT
68.81	21.60	30.30

For Your Reference Only

## Typical DC Bias Performance

