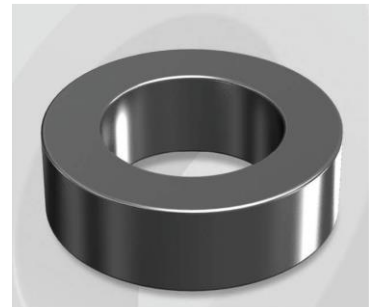


CH270060GT

Electrical Characteristics

Material	Permeability (μ)	AL \pm 8% (nH/N ²)	DCB (% min) @ 100 Oe	Coreloss (mW/cm ³ , max) @ 50kHz, 1000G
High Flux GT	60	75	77.4	180

OD : 270



Core Dimensions

Dimensions		Uncoated		Coated		Color	Packaging
		(mm)	(inch)	(mm)	(inch)		
OD	(Max)	26.92	1.060	27.70	1.091	Black	Box Qty = 360 pcs
ID	(min)	14.73	0.580	14.10	0.555		
HT	(max)	11.18	0.440	11.99	0.472		

Physical Characteristics

Cross Section (A)	Path Length (l)	Window Area (Wa)	Volume (V)	Breakdown Voltage (Vac)
0.654 cm ²	6.35 cm	1.56 cm ²	4.152 cm ³	1,000
0.101 in ²	2.500 in	307,874 cmil	0.2534 in ³	

Winding Information

0% Winding length/turn (cm)		
3.758		
40% winding factor Surface Area (cm ²)		
34.42		
40% Wound Di.(mm)		
OD	ID	HT
31.16	9.23	16.16

For Your Reference Only

Typical DC Bias Performance

