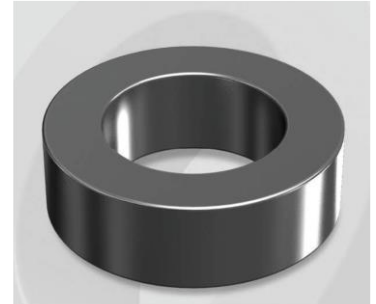


CH234060GT

Electrical Characteristics

Material	Permeability (μ)	AL \pm 8% (nH/N ²)	DCB (% min) @ 100 Oe	Coreloss (mW/cm ² , max) @ 50kHz, 1000G
High Flux GT	60	51	77.4	180

OD : 234



Core Dimensions

Dimensions		Uncoated		Coated		Color	Packaging
		(mm)	(inch)	(mm)	(inch)		
OD	(Max)	23.57	0.928	24.30	0.957	Black	Box Qty = 750 pcs
ID	(min)	14.40	0.567	13.77	0.542		
HT	(max)	8.89	0.350	9.70	0.382		

Physical Characteristics

Cross Section (A)	Path Length (l)	Window Area (Wa)	Volume (V)	Breakdown Voltage (Vac)
0.388 cm ²	5.88 cm	1.49 cm ²	2.28 cm ³	1,000
0.060 in ²	2.31 in	294,060 cmil	0.139 in ³	

Winding Information

0% Winding length/turn (cm)		
2.993		
40% winding factor Surface Area (cm ²)		
26.78		
40% Wound Di.(mm)		
OD	ID	HT
27.76	9.02	13.81

For Your Reference Only

Typical DC Bias Performance

