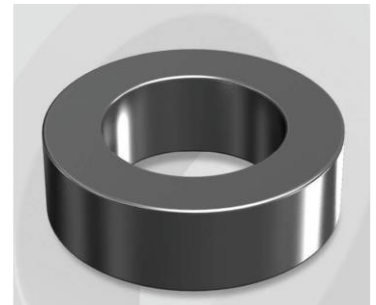


# CH172060GT

## Electrical Characteristics

Material	Permeability ( $\mu$ )	AL $\pm$ 8% (nH/N <sup>2</sup> )	DCB (% min) @ 100 Oe	Coreloss (mW/cm <sup>3</sup> , max) @ 50kHz, 1000G
High Flux GT	60	43	77.4	180

OD : 172



## Core Dimensions

Dimensions		Uncoated		Coated		Color	Packaging
		(mm)	(inch)	(mm)	(inch)		
OD	(Max)	17.27	0.680	18.03	0.710	Black	Box Qty = 1,960 pcs
ID	(min)	9.65	0.380	9.02	0.355		
HT	(max)	6.35	0.250	7.11	0.280		

## Physical Characteristics

Cross Section (A)	Path Length (l)	Window Area (Wa)	Volume (V)	Breakdown Voltage (Vac)
0.232 cm <sup>2</sup>	4.14 cm	0.638 cm <sup>2</sup>	0.9605 cm <sup>3</sup>	1,000
0.03596 in <sup>2</sup>	1.630 in	125,913 cmil	0.0586 in <sup>3</sup>	

## Winding Information

0% Winding length/turn (cm)		
2.323		
40% winding factor Surface Area (cm <sup>2</sup> )		
13.91		
40% Wound Di.(mm)		
OD	ID	HT
20.24	5.90	9.77

For Your Reference Only

## Typical DC Bias Performance

