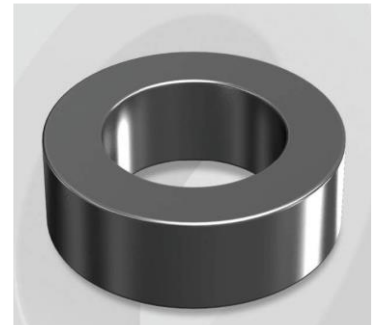


CS572026G

Electrical Characteristics

Material	Permeability (μ)	AL ± 8% (nH/N ²)	DCB (% min) @ 200 Oe	Coreloss (mW/cm ² , max) @50kHz, 300G
SENDUST	26	33	46.0	27

OD : 572



Core Dimensions

Dimensions		Uncoated		Coated		Color	Packaging
		(mm)	(inch)	(mm)	(inch)		
OD	(Max)	57.15	2.250	58.00	2.283	Black	Box Qty = 88 pcs
ID	(min)	35.56	1.400	34.70	1.366		
HT	(max)	13.97	0.550	14.86	0.585		

Physical Characteristics

Cross Section (A)	Path Length (ℓ)	Window Area (Wa)	Volume (V)	Breakdown Voltage (Vac)
1.444 cm ²	14.30 cm	9.48 cm ²	20.690 cm ³	1,000
0.224 in ²	5.630 in	1,870,930 cmil	1.2625 in ³	

Winding Information

0% Winding length/turn (cm)		
5.302		
40% winding factor Surface Area (cm ²)		
133.19		
40% Wound Di.(mm)		
OD	ID	HT
66.85	22.74	25.26

For Your Reference Only

Typical DC Bias Performance

