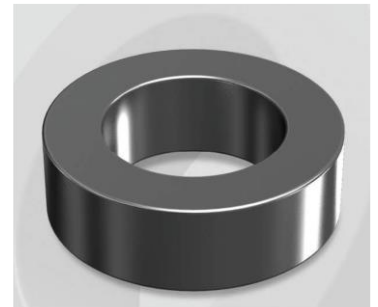


CS358090G

Electrical Characteristics

Material	Permeability (μ)	AL \pm 8% (nH/N ²)	DCB (% min) @ 30 Oe	Coreloss (mW/cm ³ , max) @ 50kHz, 1000G
SENDUST	90	84	64.4	320

OD : 358



Core Dimensions

Dimensions		Uncoated		Coated		Color	Packaging
		(mm)	(inch)	(mm)	(inch)		
OD	(Max)	35.81	1.410	36.70	1.445	Black	Box Qty = 240 pcs
ID	(Min)	22.35	0.880	21.50	0.846		
HT	(Max)	10.46	0.412	11.28	0.444		

Physical Characteristics

Cross Section (A)	Path Length (l)	Window Area (Wa)	Volume (V)	Breakdown Voltage (Vac)
0.678 cm ²	8.98 cm	3.64 cm ²	6.0884 cm ³	1,000
0.1051 in ²	3.535 in	718,374 cmil	0.3715 in ³	

Winding Information

0% Winding length/turn (cm)		
3.776		
40% winding factor Surface Area (cm ²)		
56.09		
40% Wound Di.(mm)		
OD	ID	HT
42.15	14.09	17.71

For Your Reference Only

Typical DC Bias Performance

