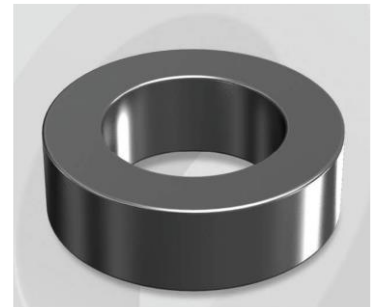


CS172090G

Electrical Characteristics

Material	Permeability (μ)	AL \pm 8% (nH/N ²)	DCB (% min) @ 30 Oe	Coreloss (mW/cm ³ , max) @ 50kHz, 1000G
SENDUST	60	64	64.4	320

OD : 172



Core Dimensions

Dimensions		Uncoated		Coated		Color	Packaging
		(mm)	(inch)	(mm)	(inch)		
OD	(Max)	17.27	0.680	18.03	0.710	Black	Box Qty = 1,960 pcs
ID	(Min)	9.65	0.380	9.02	0.355		
HT	(Max)	6.35	0.250	7.11	0.280		

Physical Characteristics

Cross Section (A)	Path Length (l)	Window Area (Wa)	Volume (V)	Breakdown Voltage (Vac)
0.232 cm ²	4.14 cm	0.638 cm ²	0.9605 cm ³	1,000
0.03596 in ²	1.630 in	125,913 cmil	0.0586 in ³	

Winding Information

0% Winding length/turn (cm)		
2.323		
40% winding factor Surface Area (cm ²)		
13.91		
40% Wound Di.(mm)		
OD	ID	HT
20.24	5.90	9.77

For Your Reference Only

Typical DC Bias Performance

