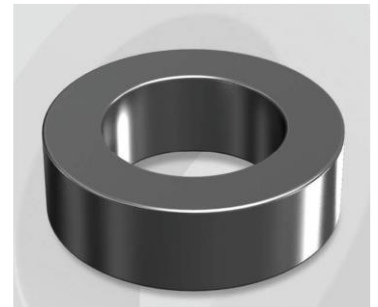


CS1340075G

Electrical Characteristics

Material	Permeability (μ)	AL \pm 8% (nH/N ²)	DCB (% min) @ 40 Oe	Coreloss (mW/cm ² , max) @ 50kHz, 100G
SENDUST	75	311	64.4	2.4

OD : 1340



Core Dimensions

Dimensions		Uncoated		Coated		Color	Packaging
		(mm)	(inch)	(mm)	(inch)		
OD	(Max)	132.50	5.217	134.20	5.283	Black	Box Qty = 3 pcs
ID	(Min)	78.60	3.094	77.00	3.031		
HT	(Max)	40.60	1.598	42.00	1.654		

Physical Characteristics

Cross Section (A)	Path Length (l)	Window Area (Wa)	Volume (V)	Breakdown Voltage (Vac)
10.694 cm ²	32.4 cm	46.57 cm ²	346.70 cm ³	1,000
1.658 in ²	12.76 in	9,190,102 cmil	21.156 in ³	

Winding Information

0% Winding length/turn (cm)		
14.120		
40% winding factor Surface Area (cm ²)		
747.18		
40% Wound Di.(mm)		
OD	ID	HT
153.59	50.41	64.99

For Your Reference Only

Typical DC Bias Performance

