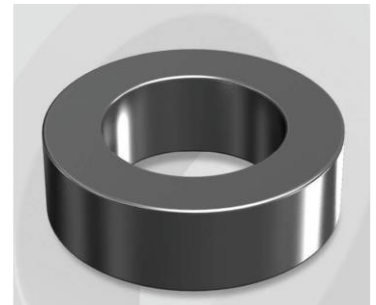


CS1325026G

Electrical Characteristics

Material	Permeability (μ)	AL \pm 8% (nH/N ²)	DCB (% min) @ 50 Oe	Coreloss (mW/cm ³ , max) @50kHz, 100G
SENDUST	26	68	81.0	2.4

OD : 1325



Core Dimensions

Dimensions		Uncoated		Coated		Color	Packaging
		(mm)	(inch)	(mm)	(inch)		
OD	(Max)	132.50	5.217	134.20	5.283	Black	Box Qty = 4 pcs
ID	(Min)	78.60	3.094	77.00	3.031		
HT	(Max)	25.40	1.000	26.80	1.055		

Physical Characteristics

Cross Section (A)	Path Length (l)	Window Area (Wa)	Volume (V)	Breakdown Voltage (Vac)
6.710 cm ²	32.4 cm	46.57 cm ²	217.54 cm ³	1,000
1.040 in ²	12.76 in	9,190,102 cmil	13.274 in ³	

Winding Information

0% Winding length/turn (cm)		
11.080		
40% winding factor Surface Area (cm ²)		
649.77		
40% Wound Di.(mm)		
OD	ID	HT
153.59	50.41	49.79

For Your Reference Only

Typical DC Bias Performance

