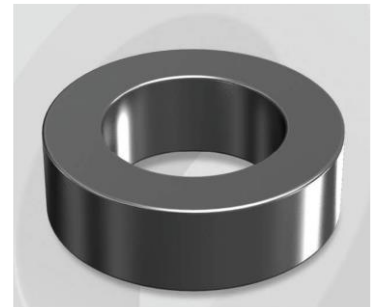


# CS127026G

## Electrical Characteristics

Material	Permeability ( $\mu$ )	AL $\pm$ 8% (nH/N <sup>2</sup> )	DCB (% min) @ 200 Oe	Coreloss (mW/cm <sup>3</sup> , max) @ 50kHz, 1000G
SENDUST	26	12	46.0	320

OD : 127



## Core Dimensions

Dimensions		Uncoated		Coated		Color	Packaging
		(mm)	(inch)	(mm)	(inch)		
OD	(Max)	12.70	0.500	13.46	0.530	Black	Box Qty = 4,000 pcs
ID	(Min)	7.62	0.300	6.99	0.275		
HT	(Max)	4.75	0.187	5.51	0.217		

## Physical Characteristics

Cross Section (A)	Path Length ( $l$ )	Window Area (Wa)	Volume (V)	Breakdown Voltage (Vac)
0.114 cm <sup>2</sup>	3.12 cm	0.383 cm <sup>2</sup>	0.3557 cm <sup>3</sup>	1,000
0.01767 in <sup>2</sup>	1.228 in	75,587 cmil	0.0217 in <sup>3</sup>	

## Winding Information

0% Winding length/turn (cm)		
1.749		
40% winding factor Surface Area (cm <sup>2</sup> )		
8.00		
40% Wound Di.(mm)		
OD	ID	HT
15.18	4.57	7.58

For Your Reference Only

## Typical DC Bias Performance

