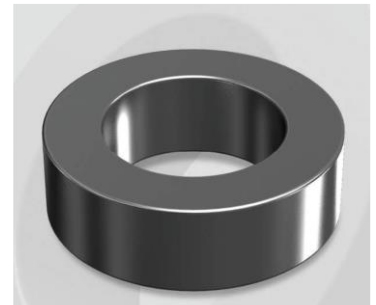


CS112075G

Electrical Characteristics

Material	Permeability (μ)	AL \pm 12% (nH/N ²)	DCB (% min) @ 40 Oe	Coreloss (mW/cm ³ , max) @ 50kHz, 1000G
SENDUST	75	32	64.4	320

OD : 112



Core Dimensions

Dimensions		Uncoated		Coated		Color	Packaging
		(mm)	(inch)	(mm)	(inch)		
OD	(Max)	11.18	0.440	11.90	0.469	Black	Box Qty = 6,000 pcs
ID	(Min)	6.35	0.250	5.89	0.232		
HT	(Max)	3.96	0.156	4.72	0.186		

Physical Characteristics

Cross Section (A)	Path Length (l)	Window Area (Wa)	Volume (V)	Breakdown Voltage (Vac)
0.0906 cm ²	2.69 cm	0.273 cm ²	0.2437 cm ³	1,000
0.01404 in ²	1.059 in	53,878 cmil	0.0149 in ³	

Winding Information

0% Winding length/turn (cm)		
1.545		
40% winding factor Surface Area (cm ²)		
6.05		
40% Wound Di.(mm)		
OD	ID	HT
13.34	3.86	6.46

For Your Reference Only

Typical DC Bias Performance

