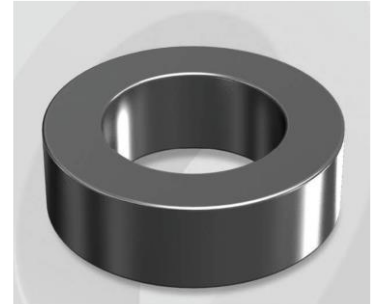


CS1033125G

Electrical Characteristics

Material	Permeability (μ)	AL \pm 8% (nH/N ²)	DCB (% min) @ 20 Oe	Coreloss (mW/cm ² , max) @ 50kHz, 100G
SENDUST	125	456	64.4	2.4

OD : 1033



Core Dimensions

Dimensions		Uncoated		Coated		Color	Packaging
		(mm)	(inch)	(mm)	(inch)		
OD	(Max)	101.60	4.000	103.10	4.059	Black	Box Qty = 6 pcs
ID	(Min)	57.20	2.252	55.70	2.193		
HT	(Max)	33.00	1.299	34.30	1.350		

Physical Characteristics

Cross Section (A)	Path Length (l)	Window Area (Wa)	Volume (V)	Breakdown Voltage (Vac)
7.044 cm ²	24.3 cm	24.37 cm ²	170.96 cm ³	1,000
1.092 in ²	9.56 in	4,808,939 cmil	10.432 in ³	

Winding Information

0% Winding length/turn (cm)		
11.600		
40% winding factor Surface Area (cm ²)		
438.88		
40% Wound Di.(mm)		
OD	ID	HT
116.93	36.46	50.84

For Your Reference Only

Typical DC Bias Performance

