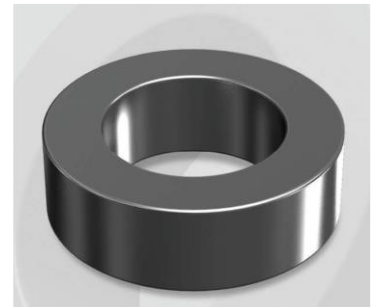


CS1027090G

Electrical Characteristics

Material	Permeability (μ)	AL \pm 8% (nH/N ²)	DCB (% min) @ 30 Oe	Coreloss (mW/cm ³ , max) @ 50kHz, 100G
SENDUST	90	277	64.4	2.4

OD : 1027



Core Dimensions

Dimensions		Uncoated		Coated		Color	Packaging
		(mm)	(inch)	(mm)	(inch)		
OD	(Max)	101.60	4.000	103.10	4.059	Black	Box Qty = 8 pcs
ID	(Min)	57.20	2.252	55.70	2.193		
HT	(Max)	27.20	1.071	28.50	1.122		

Physical Characteristics

Cross Section (A)	Path Length (l)	Window Area (Wa)	Volume (V)	Breakdown Voltage (Vac)
5.944 cm ²	24.3 cm	24.37 cm ²	144.26 cm ³	1,000
0.921 in ²	9.56 in	4,808,939 cmil	8.803 in ³	

Winding Information

0% Winding length/turn (cm)		
10.440		
40% winding factor Surface Area (cm ²)		
410.93		
40% Wound Di.(mm)		
OD	ID	HT
116.93	36.46	45.04

For Your Reference Only

Typical DC Bias Performance

