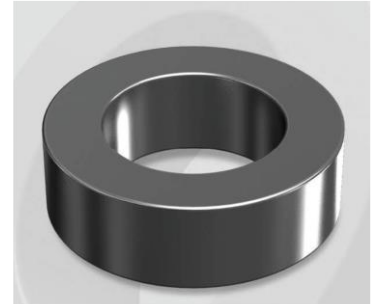


# CS1027026G

## Electrical Characteristics

Material	Permeability ( $\mu$ )	AL $\pm$ 8% (nH/N <sup>2</sup> )	DCB (% min) @ 50 Oe	Coreloss (mW/cm <sup>3</sup> , max) @50kHz, 100G
SENDUST	26	80	81.0	2.4

OD : 1027



## Core Dimensions

Dimensions		Uncoated		Coated		Color	Packaging
		(mm)	(inch)	(mm)	(inch)		
OD	(Max)	101.60	4.000	103.10	4.059	Black	Box Qty = 8 pcs
ID	(Min)	57.20	2.252	55.70	2.193		
HT	(Max)	27.20	1.071	28.50	1.122		

## Physical Characteristics

Cross Section (A)	Path Length (l)	Window Area (Wa)	Volume (V)	Breakdown Voltage (Vac)
5.944 cm <sup>2</sup>	24.3 cm	24.37 cm <sup>2</sup>	144.26 cm <sup>3</sup>	1,000
0.921 in <sup>2</sup>	9.56 in	4,808,939 cmil	8.803 in <sup>3</sup>	

## Winding Information

0% Winding length/turn (cm)		
10.440		
40% winding factor Surface Area (cm <sup>2</sup> )		
410.93		
40% Wound Di.(mm)		
OD	ID	HT
116.93	36.46	45.04

For Your Reference Only

## Typical DC Bias Performance

