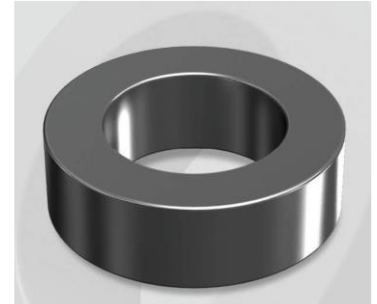


CS1016125G

Electrical Characteristics

Material	Permeability (μ)	AL \pm 8% (nH/N ²)	DCB (% min) @ 20 Oe	Coreloss (mW/cm ³ , max) @ 50kHz, 100G
SENDUST	125	228	64.4	2.4

OD : 1016



Core Dimensions

Dimensions		Uncoated		Coated		Color	Packaging
		(mm)	(inch)	(mm)	(inch)		
OD	(Max)	101.60	4.000	103.10	4.059	Black	Box Qty = 12 pcs
ID	(Min)	57.20	2.252	55.70	2.193		
HT	(Max)	16.50	0.650	17.80	0.701		

Physical Characteristics

Cross Section (A)	Path Length (l)	Window Area (Wa)	Volume (V)	Breakdown Voltage (Vac)
3.522 cm ²	24.3 cm	24.37 cm ²	85.48 cm ³	1,000
0.546 in ²	9.56 in	4,808,939 cmil	5.216 in ³	

Winding Information

0% Winding length/turn (cm)		
8.300		
40% winding factor Surface Area (cm ²)		
359.37		
40% Wound Di.(mm)		
OD	ID	HT
116.93	36.46	34.34

For Your Reference Only

Typical DC Bias Performance

