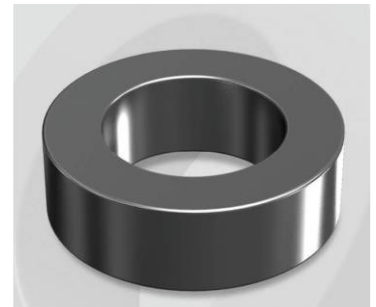


CM778125G

Electrical Characteristics

Material	Permeability (μ)	AL \pm 8% (nH/N ²)	DCB (% min) @ 20 Oe	Coreloss (mW/cm ³ , max) @ 50kHz, 500G
MPP	125	178	80.04	72

OD : 778



Core Dimensions

Dimensions		Uncoated		Coated		Color	Packaging
		(mm)	(inch)	(mm)	(inch)		
OD	(Max)	77.80	3.063	78.90	3.106	Black	Box Qty = 35 pcs
ID	(min)	49.23	1.938	48.0	1.890		
HT	(max)	15.9	0.626	17.2	0.677		

Physical Characteristics

Cross Section (A)	Path Length (l)	Window Area (Wa)	Volume (V)	Breakdown Voltage (Vac)
2.270 cm ²	20.0 cm	17.99 cm ²	45.400 cm ³	1,000
0.352 in ²	7.87 in	3,550,424 cmil	2.770 in ³	

Winding Information

0% Winding length/turn (cm)		
6.530		
40% winding factor Surface Area (cm ²)		
236.84		
40% Wound Di.(mm)		
OD	ID	HT
91.14	31.33	31.65

For Your Reference Only

Typical DC Bias Performance

