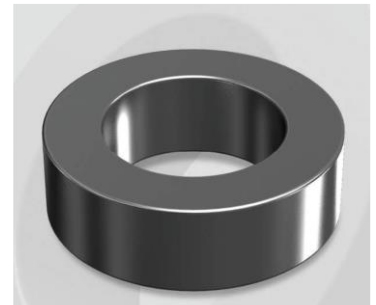


CM468060G

Electrical Characteristics

Material	Permeability (μ)	AL \pm 8% (nH/N ²)	DCB (% min) @ 50 Oe	Coreloss (mW/cm ² , max) @ 50kHz, 500G
MPP	60	86	73.60	50

OD : 468



Core Dimensions

Dimensions		Uncoated		Coated		Color	Packaging
		(mm)	(inch)	(mm)	(inch)		
OD	(Max)	46.74	1.840	47.60	1.874	Black	Box Qty = 72 pcs
ID	(min)	28.70	1.130	27.90	1.098		
HT	(max)	15.24	0.600	16.13	0.635		

Physical Characteristics

Cross Section (A)	Path Length (l)	Window Area (Wa)	Volume (V)	Breakdown Voltage (Vac)
1.340 cm ²	11.63 cm	6.11 cm ²	15.584 cm ³	1,000
0.208 in ²	4.58 in	1,205,842 cmil	0.951 in ³	

Winding Information

0% Winding length/turn (cm)		
5.196		
40% winding factor Surface Area (cm ²)		
97.79		
40% Wound Di.(mm)		
OD	ID	HT
54.66	18.26	24.48

For Your Reference Only

Typical DC Bias Performance

