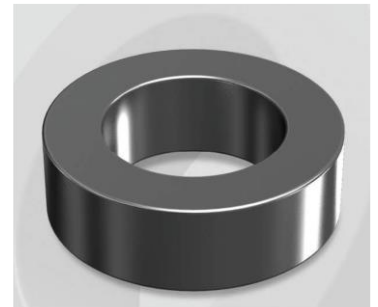


CM400173G

Electrical Characteristics

Material	Permeability (μ)	AL \pm 8% (nH/N ²)	DCB (% min) @ 20 Oe	Coreloss (mW/cm ³ , max) @ 50kHz, 500G
MPP	173	233	73.60	110

OD : 400



Core Dimensions

Dimensions		Uncoated		Coated		Color	Packaging
		(mm)	(inch)	(mm)	(inch)		
OD	(Max)	39.88	1.570	40.70	1.602	Black	Box Qty = 120 pcs
ID	(min)	24.13	0.950	23.30	0.917		
HT	(max)	14.48	0.570	15.37	0.605		

Physical Characteristics

Cross Section (A)	Path Length (l)	Window Area (Wa)	Volume (V)	Breakdown Voltage (Vac)
1.072 cm ²	9.84 cm	4.27 cm ²	10.5485 cm ³	1,000
0.1662 in ²	3.87 in	842,708 cmil	0.6437 in ³	

Winding Information

0% Winding length/turn (cm)		
4.814		
40% winding factor Surface Area (cm ²)		
73.77		
40% Wound Di.(mm)		
OD	ID	HT
46.57	15.26	22.32

For Your Reference Only

Typical DC Bias Performance

