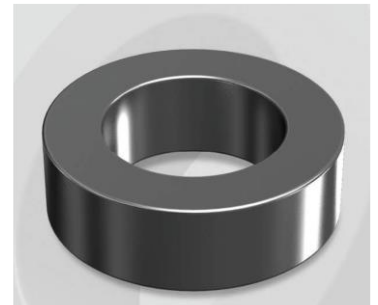


CM1625026G

Electrical Characteristics

Material	Permeability (μ)	AL \pm 8% (nH/N ²)	DCB (% min) @ 50 Oe	Coreloss (mW/cm ³ , max) @50kHz, 100G
MPP	26	80	49.68	1.8

OD : 1625



Core Dimensions

Dimensions		Uncoated		Coated		Color	Packaging
		(mm)	(inch)	(mm)	(inch)		
OD	(Max)	165.0	6.496	167.2	6.583	Black	Box Qty = 4 pcs
ID	(min)	88.9	3.500	86.9	3.421		
HT	(max)	25.4	1.000	27.3	1.075		

Physical Characteristics

Cross Section (A)	Path Length (l)	Window Area (Wa)	Volume (V)	Breakdown Voltage (Vac)
9.46 cm ²	38.65 cm	59.31 cm ²	365.63 cm ³	1,000
1.466 in ²	15.22 in	11,705,189 cmil	22.311 in ³	

Winding Information

0% Winding length/turn (cm)		
13.490		
40% winding factor Surface Area (cm ²)		
916.95		
40% Wound Di.(mm)		
OD	ID	HT
188.62	56.89	53.02

For Your Reference Only

Typical DC Bias Performance

