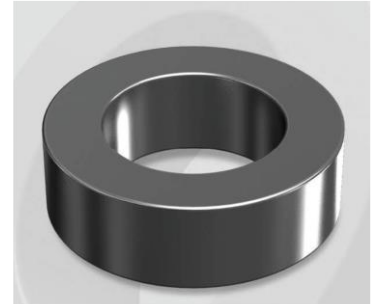


CH270160G14

Electrical Characteristics

Material	Permeability (μ)	AL \pm 8% (nH/N ²)	DCB (% min) @ 20 Oe	Coreloss (mW/cm ² , max) @ 50kHz, 1000G
High Flux	160	251	81.0	360

OD : 270



Core Dimensions

Dimensions		Uncoated		Coated		Color	Packaging
		(mm)	(inch)	(mm)	(inch)		
OD	(Max)	26.92	1.060	27.70	1.091	Black	Box Qty = 324 pcs
ID	(min)	14.73	0.580	14.10	0.555		
HT	(max)	14.00	0.551	15.00	0.591		

Physical Characteristics

Cross Section (A)	Path Length (l)	Window Area (Wa)	Volume (V)	Breakdown Voltage (Vac)
0.819 cm ²	6.35 cm	1.56 cm ²	5.201 cm ³	1,000
0.1269 in ²	2.50 in	307,874 cmil	0.3173 in ³	

Winding Information

0% Winding length/turn (cm)		
4.360		
40% winding factor Surface Area (cm ²)		
38.24		
40% Wound Di.(mm)		
OD	ID	HT
31.16	9.23	19.17

For Your Reference Only

Typical DC Bias Performance

