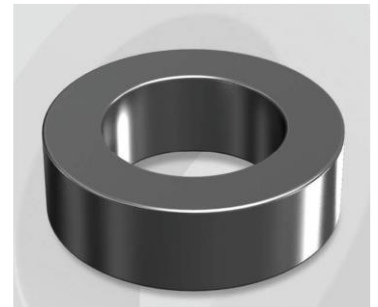


CH1325026G

Electrical Characteristics

Material	Permeability (μ)	AL \pm 8% (nH/N ²)	DCB (% min) @ 50 Oe	Coreloss (mW/cm ² , max) @ 50kHz, 100G
High Flux	26	68	86.48	4.5

OD : 1325



Core Dimensions

Dimensions		Uncoated		Coated		Color	Packaging
		(mm)	(inch)	(mm)	(inch)		
OD	(Max)	132.50	5.217	134.20	5.283	Black	Box Qty = 4 pcs
ID	(min)	78.60	3.094	77.00	3.031		
HT	(max)	25.40	1.000	26.80	1.055		

Physical Characteristics

Cross Section (A)	Path Length (l)	Window Area (Wa)	Volume (V)	Breakdown Voltage (Vac)
6.710 cm ²	32.42 cm	46.57 cm ²	217.538 cm ³	1,000
1.04005 in ²	12.764 in	9,190,102 cmil	13.2742 in ³	

Winding Information

0% Winding length/turn (cm)		
11.080		
40% winding factor Surface Area (cm ²)		
649.77		
40% Wound Di.(mm)		
OD	ID	HT
153.59	50.41	49.79

For Your Reference Only

Typical DC Bias Performance

