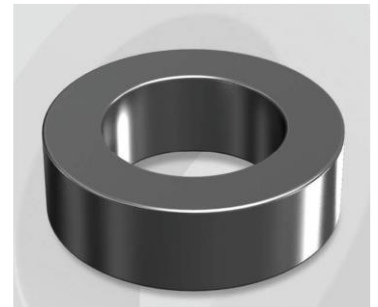


# CH1033125G

## Electrical Characteristics

Material	Permeability ( $\mu$ )	AL $\pm$ 8% (nH/N <sup>2</sup> )	DCB (% min) @ 20 Oe	Coreloss (mW/cm <sup>2</sup> , max) @ 50kHz, 100G
High Flux	125	456	84.64	4

OD : 1033



## Core Dimensions

Dimensions		Uncoated		Coated		Color	Packaging
		(mm)	(inch)	(mm)	(inch)		
OD	(Max)	101.60	4.000	103.10	4.059	Black	Box Qty = 6 pcs
ID	(min)	57.20	2.252	55.70	2.193		
HT	(max)	33.00	1.299	34.30	1.350		

## Physical Characteristics

Cross Section (A)	Path Length (l)	Window Area (Wa)	Volume (V)	Breakdown Voltage (Vac)
7.044 cm <sup>2</sup>	24.27 cm	24.37 cm <sup>2</sup>	170.958 cm <sup>3</sup>	1,000
1.09182 in <sup>2</sup>	9.555 in	4,808,939 cmil	10.4318 in <sup>3</sup>	

## Winding Information

0% Winding length/turn (cm)		
11.600		
40% winding factor Surface Area (cm <sup>2</sup> )		
438.88		
40% Wound Di.(mm)		
OD	ID	HT
116.93	36.46	50.84

For Your Reference Only

## Typical DC Bias Performance

