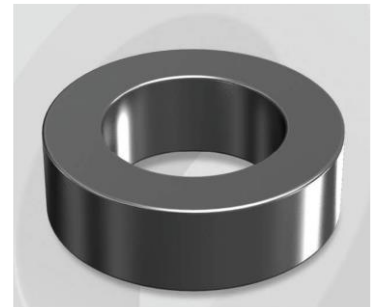


CH102125G

Electrical Characteristics

Material	Permeability (μ)	AL \pm 8% (nH/N ²)	DCB (% min) @ 20 Oe	Coreloss (mW/cm ³ , max) @ 50kHz, 1000G
High Flux	125	66	84.64	340

OD : 102



Core Dimensions

Dimensions		Uncoated		Coated		Color	Packaging
		(mm)	(inch)	(mm)	(inch)		
OD	(Max)	10.16	0.400	10.80	0.425	Black	Box Qty = 8,000 pcs
ID	(min)	5.08	0.200	4.57	0.180		
HT	(max)	3.96	0.156	4.57	0.180		

Physical Characteristics

Cross Section (A)	Path Length (l)	Window Area (Wa)	Volume (V)	Breakdown Voltage (Vac)
0.1000 cm ²	2.38 cm	0.1640 cm ²	0.2380 cm ³	1,000
0.01550 in ²	0.937 in	32,366 cmil	0.0145 in ³	

Winding Information

0% Winding length/turn (cm)		
1.537		
40% winding factor Surface Area (cm ²)		
4.85		
40% Wound Di.(mm)		
OD	ID	HT
11.91	2.99	5.91

For Your Reference Only

Typical DC Bias Performance

