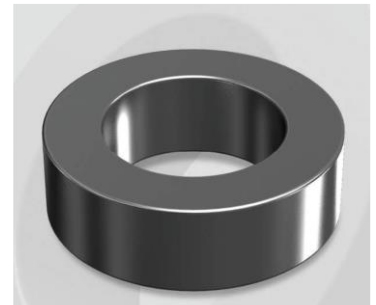


# CH097125G

## Electrical Characteristics

Material	Permeability ( $\mu$ )	AL $\pm$ 8% (nH/N <sup>2</sup> )	DCB (% min) @ 20 Oe	Coreloss (mW/cm <sup>2</sup> , max) @ 50kHz, 1000G
High Flux	125	66	84.64	340

OD : 097



## Core Dimensions

Dimensions		Uncoated		Coated		Color	Packaging
		(mm)	(inch)	(mm)	(inch)		
OD	(Max)	9.65	0.380	10.29	0.405	Black	Box Qty = 8,000 pcs
ID	(min)	4.78	0.188	4.27	0.168		
HT	(max)	3.96	0.156	4.57	0.180		

## Physical Characteristics

Cross Section (A)	Path Length ( $l$ )	Window Area (Wa)	Volume (V)	Breakdown Voltage (Vac)
0.0945 cm <sup>2</sup>	2.18 cm	0.1429 cm <sup>2</sup>	0.2060 cm <sup>3</sup>	1,000
0.01465 in <sup>2</sup>	0.858 in	28,202 cmil	0.0126 in <sup>3</sup>	

## Winding Information

0% Winding length/turn (cm)		
1.516		
40% winding factor Surface Area (cm <sup>2</sup> )		
4.47		
40% Wound Di.(mm)		
OD	ID	HT
11.32	2.79	5.83

For Your Reference Only

## Typical DC Bias Performance

